



Founded in 1988, the **Endocrine Nurses Society** is a non-profit professional organization for Registered Nurses, Nurse Practitioners and all Health Professionals interested in collaborative, interdisciplinary practice caring for persons with, or at risk for, endocrine disorders.

*Staffed by members who volunteer
Funded by tax-deductible donations*



Celebrating 35 years of Volunteerism!

100,000 hours donated

37 symposia 70 awards

No paid staff No office space

ENS is truly unique!

ENS Awards—All members are eligible to apply

Nursing Clinical Research Grants \$2,500

Clinical Improvement Grants \$2,500

Poster Awards \$750

Travel Awards \$750

Betsy Love McClung Outstanding Nurse Development Award \$3,000

<https://endo-nurses.org>
endocrinenurses@gmail.com

Over 100,000 sold!

Advance Practice in Endocrinology Nursing

Editors: Sofia Llahana, Cecelia Follin,
Chris Yedinak, Ashely Grossman

*69 total chapters, numerous by ENS members
118 authors from 15 countries*

Springer UK 2019, Hard copy \$159.99, eBook \$119,
[order](#)

TEAM PITUITARY
Endocrine Nurses Society &
Barrow Neurology Institute Collaboration
NOVEMBER 4, 2023
Barrow Neurological Institute
350 W Thomas Rd., Phoenix, Arizona 85013

ENS website



REGISTER HERE



<https://endo-nurses.org>
endocrinenurses@gmail.com

Registration fee includes:

Symposium, continental breakfast, lunch, program materials and continuing education credits.

Refund and Cancellation Policy:

ENS reserves the right to cancel or change the program for due causes. Cancellation of the program by ENS will result in a full refund of tuition. ENS are not responsible for the refund of travel or hotel expenses under any circumstances.



**Team Pituitary
Endocrine Conference**

**Saturday
Nov. 4, 2023**

Barrow Neurological Institute
St Joseph's Hospital & Medical Center
Phoenix, Arizona, USA

Program

In-person event

Endocrine Nurses Society
&
Barrow Neurological Institute
Collaboration

REGISTER HERE



Faculty



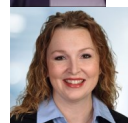
Kevin Yuen MD, FRCP (UK), FACE
Professor of Neurology, Medical Director Barrow Pituitary Center & Barrow Neuroendocrinology Clinic, Phoenix, Arizona



Christine Yedinak DNP, FNP, MN
ENS Immediate Past President
Associate Professor, Department Neurosurgery Oregon Health & Sciences University, Portland, Oregon



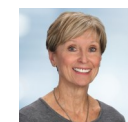
Connie Burten BSN, RN*
Clinical Nurse Coordinator, Barrow Pituitary & Neuro-Endocrine Center, Barrow Neurological Institute, Phoenix, AZ



Eva Duran DNP, APRN, FNP-C*
Nurse Practitioner, Radiation Oncology, Head & Neck Program, Barrow Neurological Institute, Phoenix, AZ



Andrew Little MD, FAANS, FACS, MBA
Professor of Neurosurgery, Barrow Neurological Institute, Phoenix, AZ



Terry Maxwell RN - Barrow Neurological Institute, Phoenix, AZ



Vinay Gunnala MD
Reproductive Endocrinology & Infertility, Southwest Fertility Center, Phoenix, AZ
Clinical Assistant Professor, Department of OB-GYN, University of Arizona College of Medicine-Phoenix, Arizona



Mark Molitch MD
Professor Emeritus, Division of Endocrinology, Metabolism & Molecular Medicine, Northwestern University Feinberg School of Medicine, Chicago, Illinois



Melanie Westfall FNP-C*
Nurse Practitioner, Asante Endocrinology & Diabetes Education, Grants Pass, Oregon



Laura Cheng RN*
Angier, North Carolina

Team Pituitary

ENS & Barrow Neurology Collaboration Saturday November 4, 2023 —in person

Barrow Neurological Institute-Goldman Auditorium
350 W Thomas Rd., Phoenix, Arizona 85013

0800-0900 Registration, Continental Breakfast, Exhibits-Marley Lobby

0900-1000 Pituitary Tumor – what now
Kevin Yuen MD, FRCP (UK), FACE
Chris Yedinak DNP, FNP, MN*

1000-1030 Diagnostic Testing Gems
Connie Burten BSN, RN*
Eva Duran APRN, FNP-C*

1030-1100 Coffee & Exhibits—Marley Lobby

1100-1200 Pituitary Surgery Top 10:
Barrow Essentials for Medical Providers
Andrew Little MD

1200-1230 Pre & Post-op Pearls in Patient Education
Terry Maxwell RN

1230-1330 Lunch (provided) - Sonntag Pavilion
Exhibits—Marley Lobby

1330-1430 Pituitary Infertility
Vinay Gunnala MD

1430-1530 When Pituitary & Diabetes Intersect
Mark Molitch MD
Melanie Westfall FNP-C*

1530-1600 Break

1600-1700 Treatment Failure– now what
Mark Molitch MD
Chris Yedinak, DNP, FNP-MN*

1700-1730 Lessons to be Learned from a Patient with Acromegaly
Laura Cheng, RN*

'Team Pituitary'

Endocrine Nurses Society &
Barrow Neurological Institute Collaboration

Who Should Attend

Physicians, nurse practitioners, physician's assistants, nurses, residents, fellows, and other healthcare professionals with an interest in the application of best practices involving the manage-

Objectives

At the end of this conference the learner should be able to recommend the appropriate diagnostic modalities for patients with pituitary disorders to ensure accurate diagnosis and intervention by the pituitary team of endocrinologists, surgeons, nurses and nurse practitioners, describe the appropriate treatment algorithms for patients with various types of pituitary disorders before and after surgery as well in lieu of surgical intervention, and recognize the importance of accurate performance of critical diagnostic testing for both post-operative hormonal and electrolyte dysfunction.

REGISTER HERE



In-person conference
6.5 category 1 CME —applied

Disclosure Policy

It is the policy of St. Joseph's Hospital & Medical Center to ensure balance, independence, objectivity, and scientific rigor in all of its educational programs. All those in control of content will disclose all relevant relationships with commercial interest. Detailed disclosures will be made in the activity handout materials.